



Renault without CAN

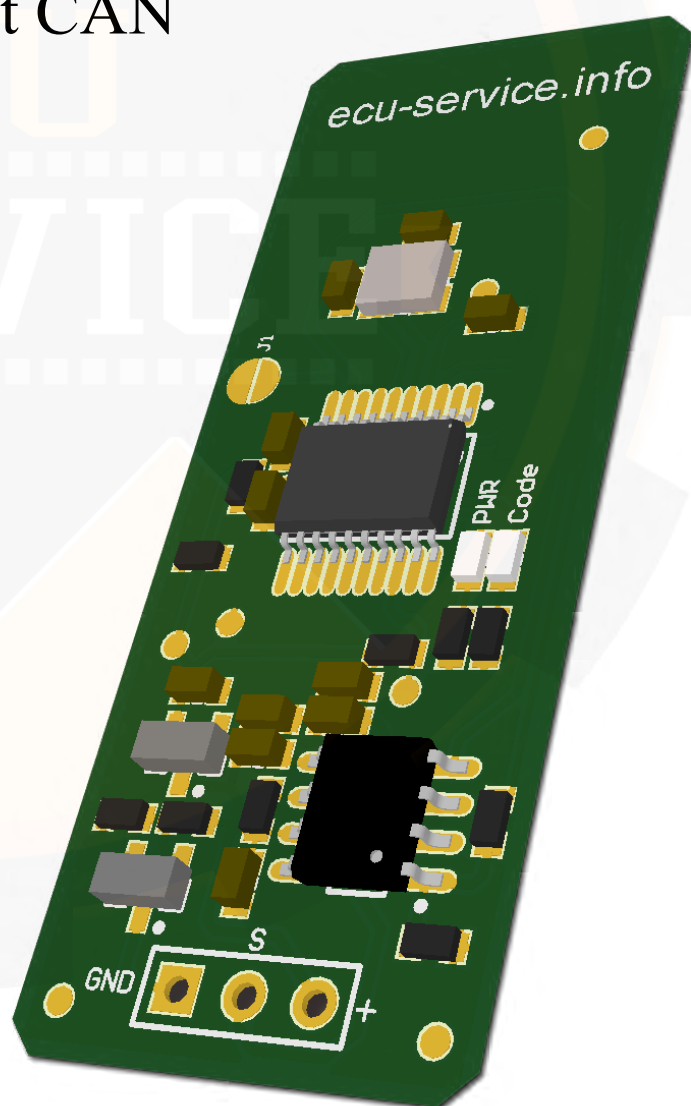
This emulator replaces damaged immo in :

Sirius 32 without CAN

1.9 2.2 and 2.5 DCi without CAN

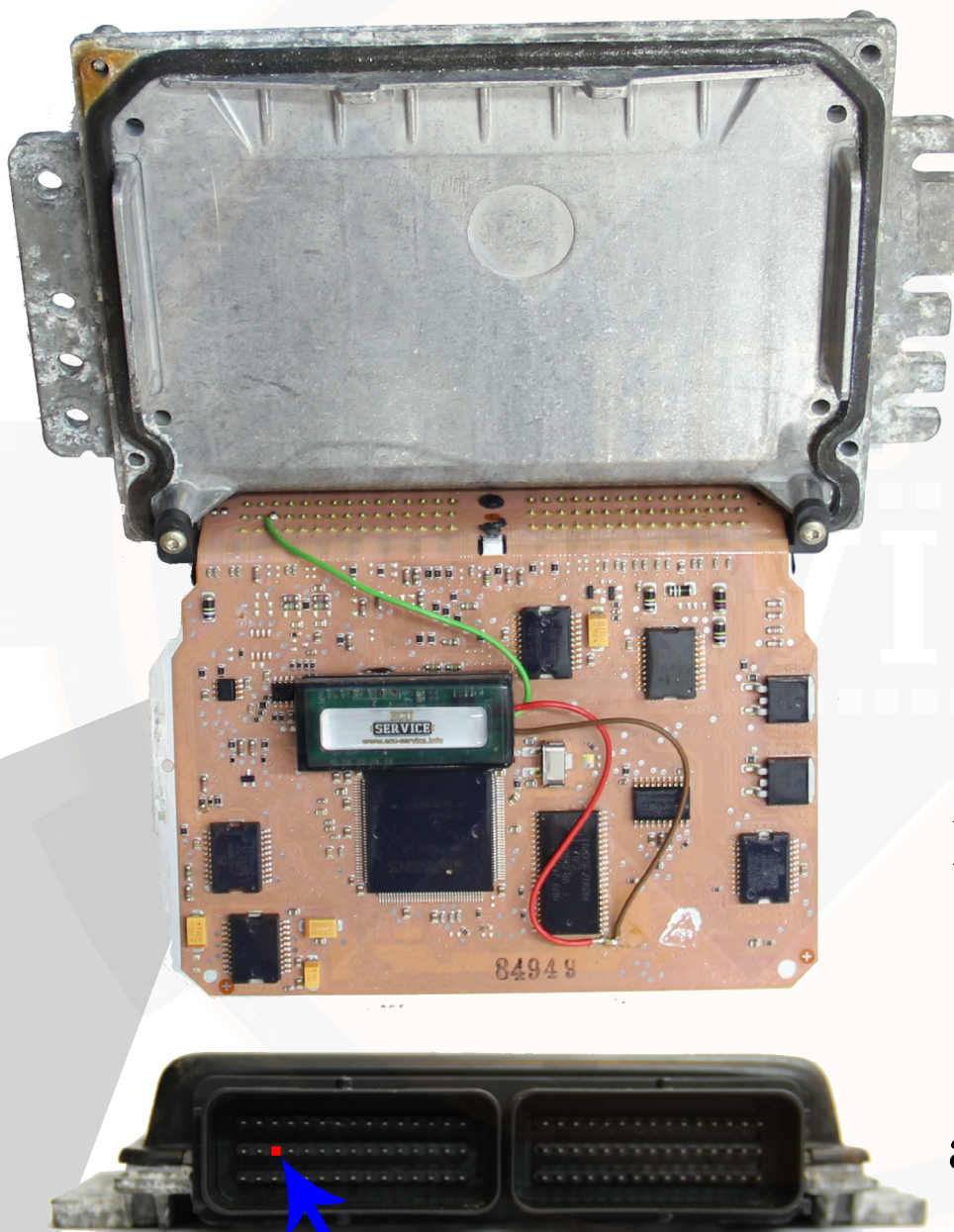
1.9 DTi 1 plug

1.9 DTi 2 plugs

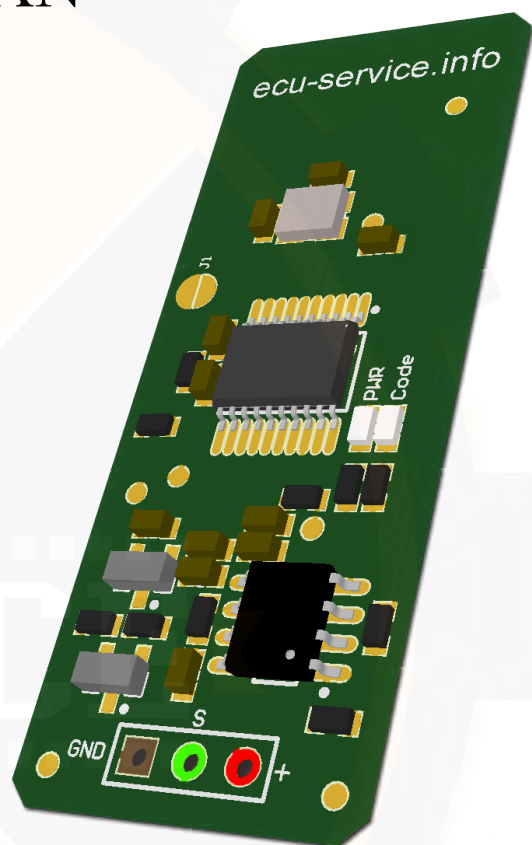




Sirius 32 without CAN



CUT OFF - PIN 58!



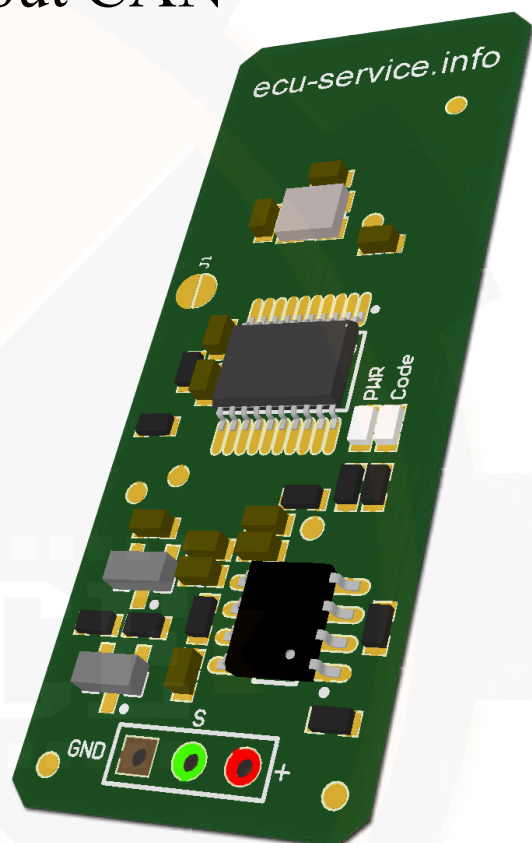
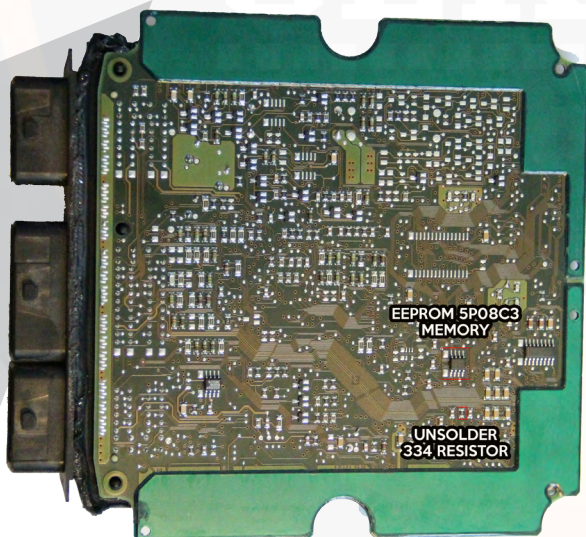
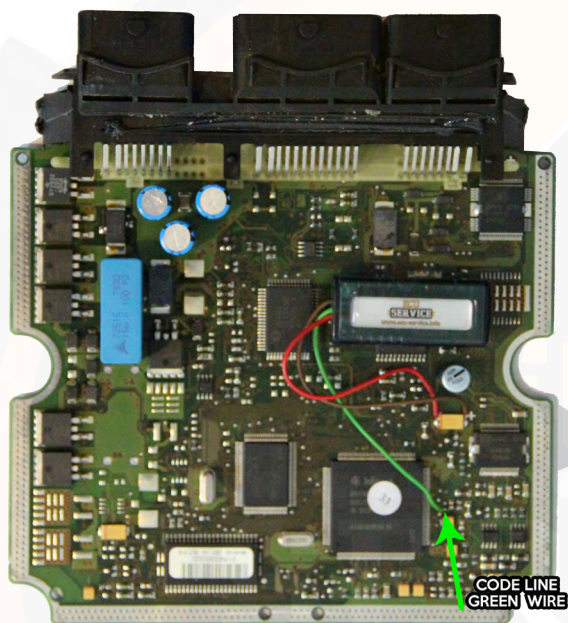
In the addresses from **4000** to **7FFF**, find all values **64 C7**, **54 D7** or **B4 5C** and change these values and two units before them into **FF FF FF FF**.

Repeat it in the whole map from **4000** to **7FFF**!





1.9 2.2 and 2.5 DCi without CAN



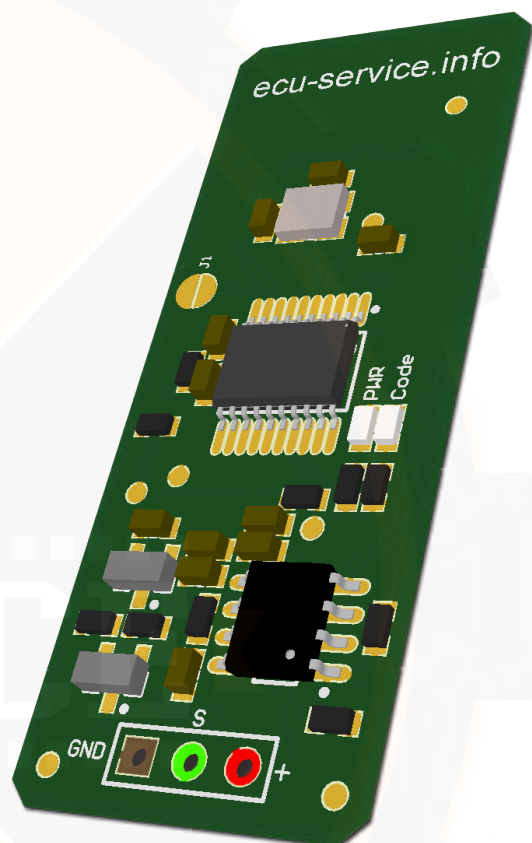
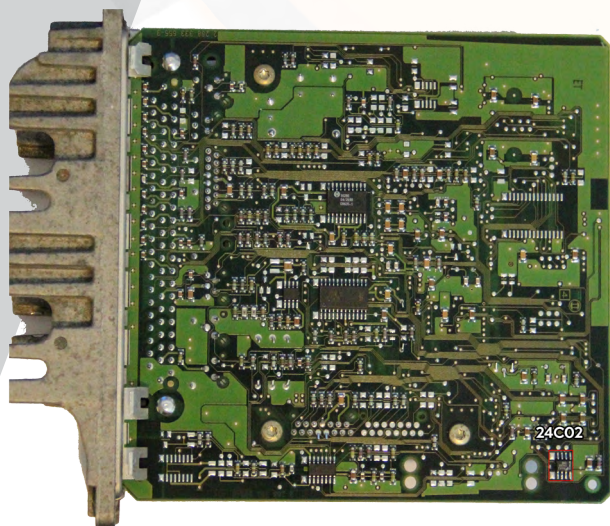
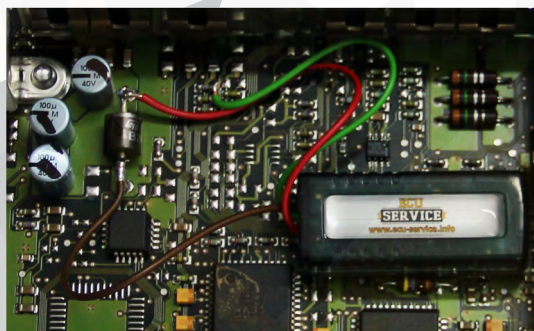
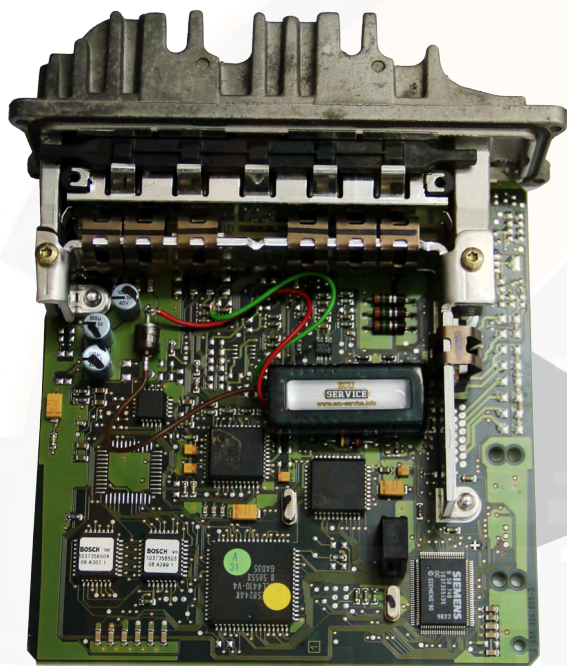
In **5P08C3** memory
in the addresses:
003E 003F 0040 0041
and
0044 0045 0046 0047
change these values into **FF**

The emulator can be used for
all 1.9, 2.2, 2.5 DCI when the
chassis number are not entered in
eeprom memory.



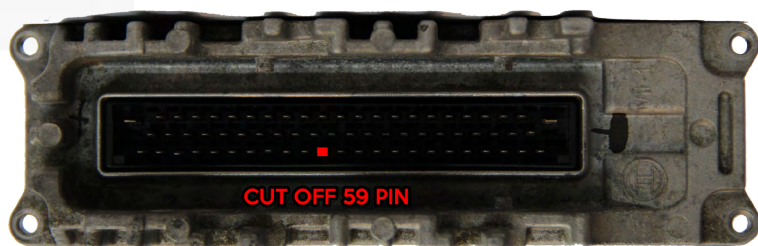


1.9 DTi 1 plug



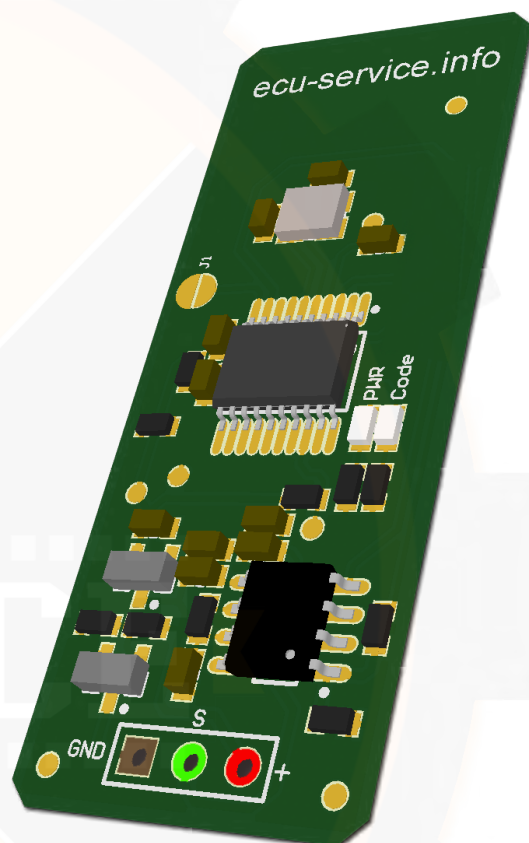
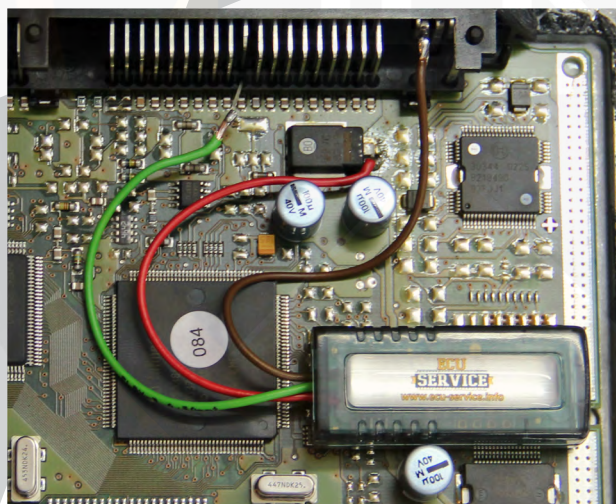
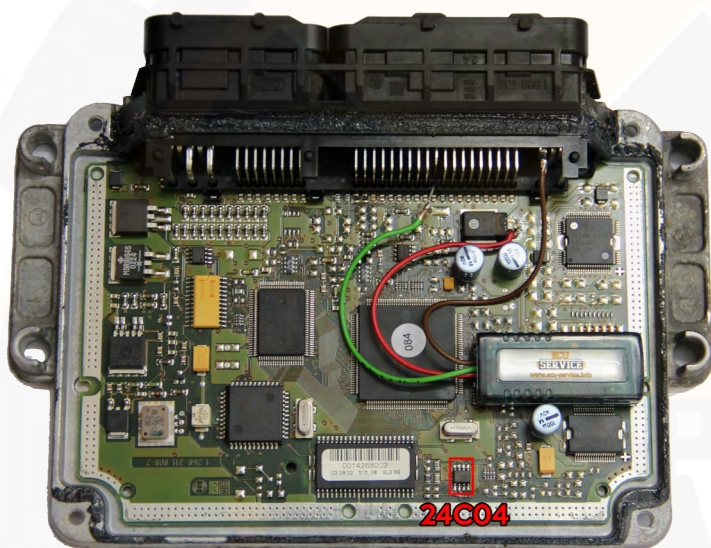
Connect the immo line of emulator to pin 59 of ECU. Connect GND and ACC to diode in the ECU.

In **24C02** memory in the addresses **3E-41, 54-57** or **3E-41, 56-59** change these values in to **FF**.





1.9 DTi 2 plugs



In the addresses from
174 to 177 and 1B7 to 1BA
change these values into
FF FF FF FF
in **24C04** memory

GND
4, 5 pin

IMMO
15 pin

12V
81 pin

CUT OFF - 15 pin
from wiring



Ecu-Service
ul. 9 Maja 21
66-010 Nowogród Bobrzański
Poland



www.ecu-service.info