



# M U L T I C A N E M U L A T O R

Equipped with auto detection of the engine ECU in the following brands:  
Renault, Citroen, Peugeot, Fiat, Alfa Romeo, Iveco.

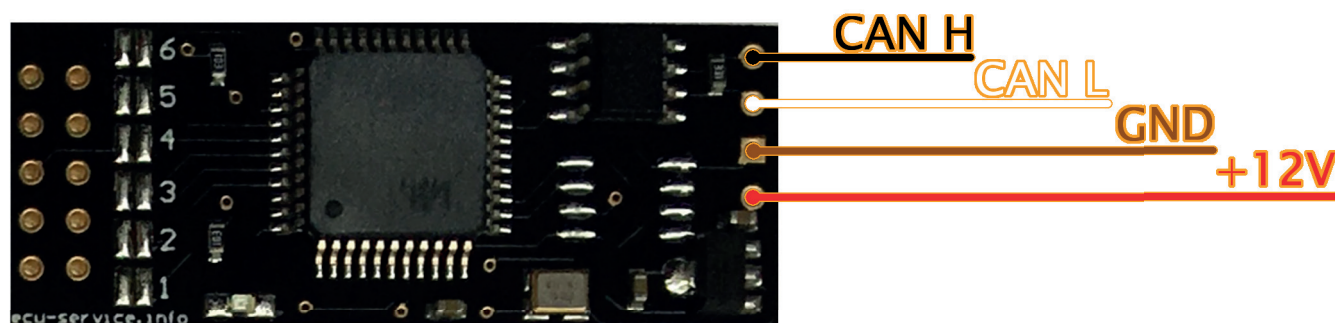
It is an innovative product on the IMMO Automotive brand market.

The emulator automatically recognises the brand and the type of the engine ECU.

It does not require the picking of any jumpers, which is what  
differentiates it amongst other emulators.

Multi CAN emulator operates the engine ECU with a CAN speed 250kb & 500kb.

The CAN speed selected with jumper J1





M U L T I  
C A N  
E M U L A T O R



# Citroen, Peugeot (PSA)

PSA PIN Ideology

CAN speed 250kB & 500kB

The PIN **2222** – ASCII **32 32 32 32** must be inserted in the engine ECU.

## Selecting CAN speed:

CAN 500kB J1– open

CAN 250kB J1– closed

## Diode behavior:

- 1 long blink (1 sec.) – the engine ECU is ready, permission to start
  - fast diode blinking (3 times per second) – incorrect PIN
- no blink – faulty plug-in of the emulator or incorrect choice of CAN speed

## Caution:

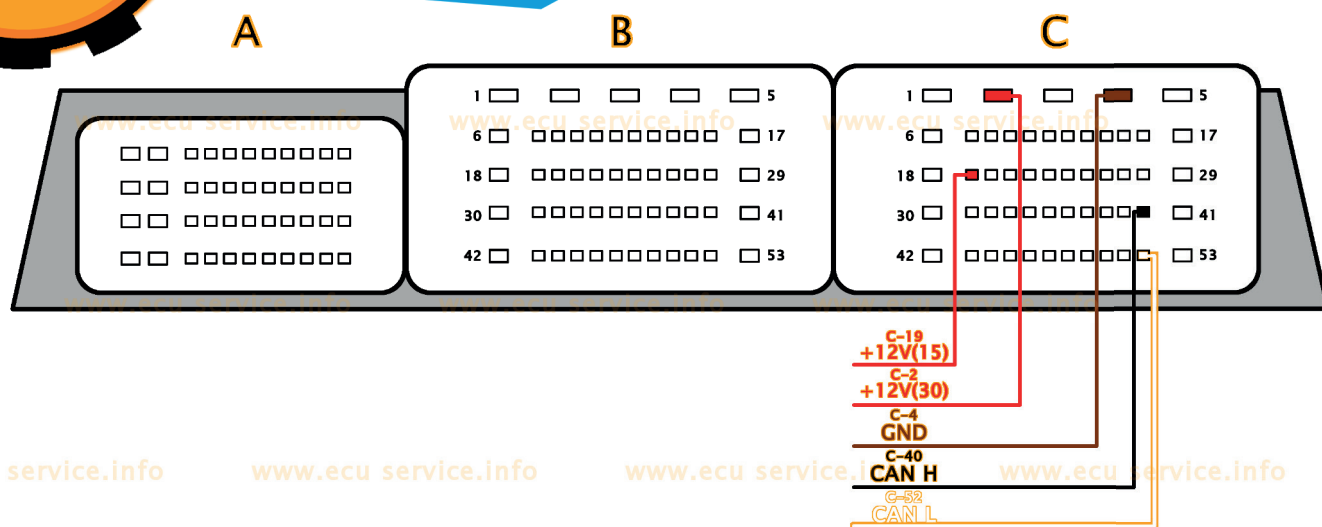
There is a possibility of an overlap in authorisation between BSI and ECU.  
In this case, please remove the transponder from the key.





# PSA with CAN 500 & 250 kb/s Citroen – Peugeot

EDC17C10, EDC17CP42 – SAK TC1797



www.ecu service.info

www.ecu service.info

www.ecu service.info

www.ecu service.info

www.ecu service.info

www.ecu service.info

www.ecu service.info

www.ecu service.info

www.ecu service.info

www.ecu service.info

www.ecu service.info

www.ecu service.info

www.ecu service.info

www.ecu service.info

www.ecu service.info

www.ecu service.info

www.ecu service.info

www.ecu service.info

www.ecu service.info

www.ecu service.info

!!!WARNING!!!

When eeprom size its 128KB

Please enter in the eeprom memory  
from address 1008A to 1008D these values:

32 32 32 32

and from address 1010A to 1010D these  
values:

32 32 32 32

www.ecu service.info

www.ecu service.info

www.ecu service.info

www.ecu service.info

!!!AFTER THAT CHANGES PLEASE CORRECT CHECKSUM!!!  
If you have any problem with checksum please contact  
our support on Skype: Ecu-Service\_support

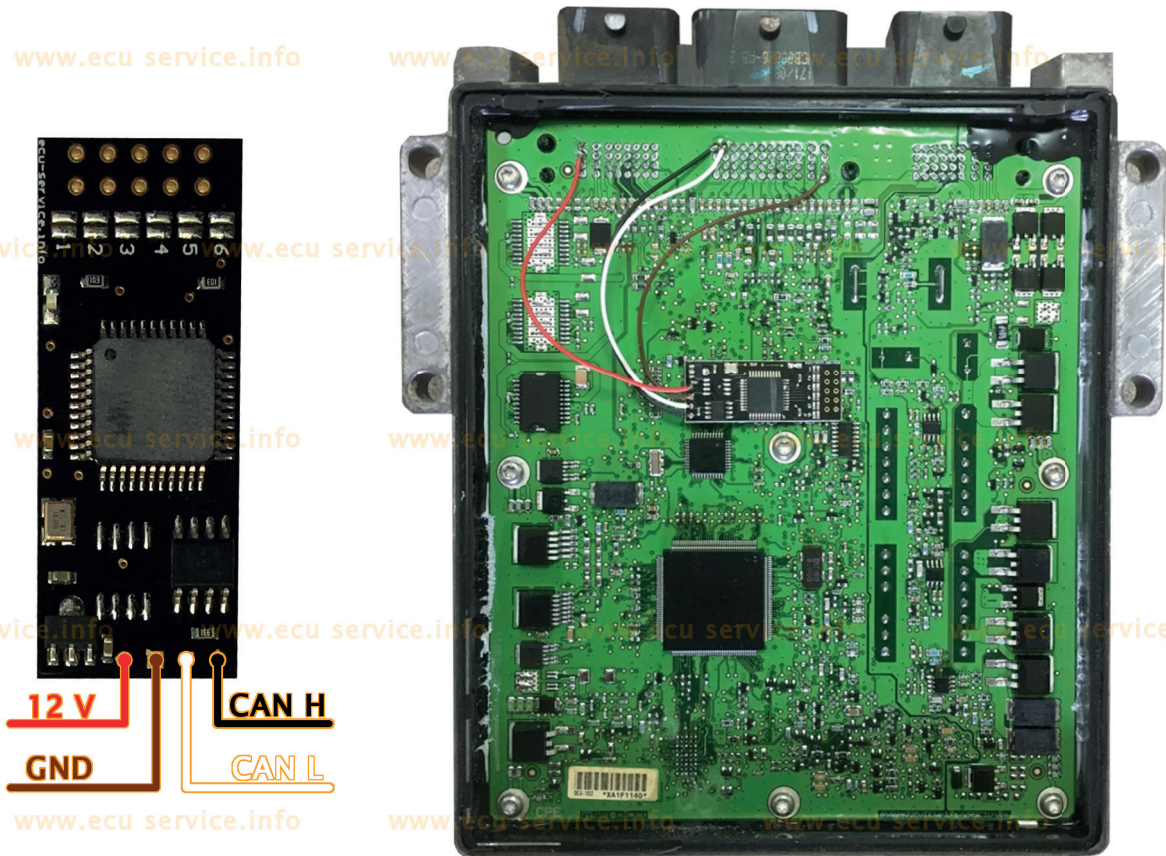
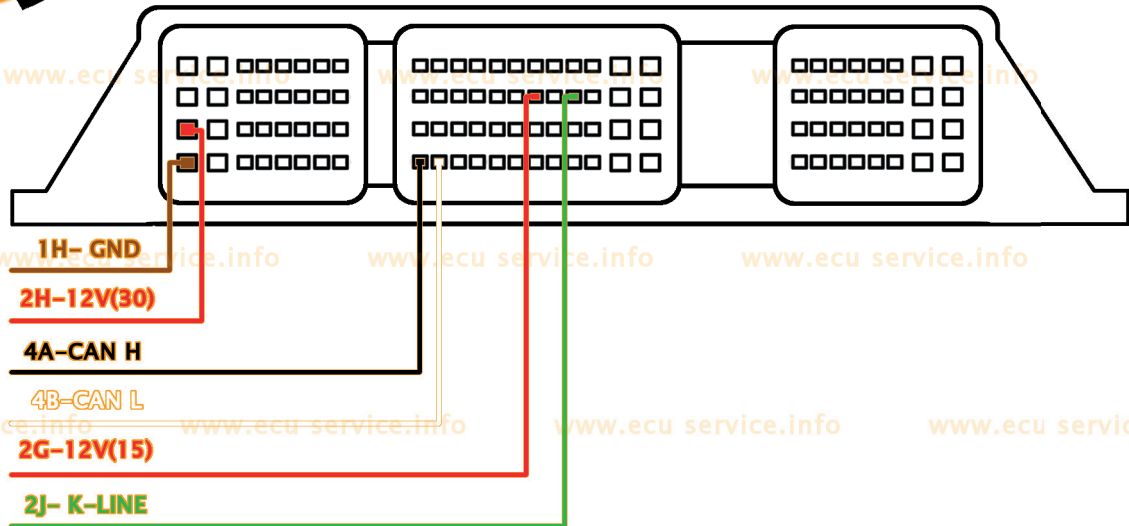
Offset (h)	00	01	02	03	04	05	06	07	08	09	0A	0B	0C	0D	0E	0F	Decoded text
00010000	01	00	E1	EE	FC	2A	00	00	01	72	5D	75	B8	00	37	30	..âiü*...r]u.,70
00010010	39	2D	30	31	2D	31	32	FF	C9	C8	31	31	2D	30	31	2D	9-01-12'ÉÇ11-01-
00010020	31	32	06	58	12	63	02	95	11	01	12	02	04	20	31	30	12.X.c.*..... 10
00010030	33	37	35	31	34	34	31	31	10	05	2F	2F	31	30	33	37	37514411../1037
00010040	35	30	38	37	36	32	00	00	00	37	FF	C9	FF	C8	01	00	508762...7'É'Ç..
00010050	20	A1	07	00	00	00	00	00	00	00	00	00	00	00	00	00	.....
00010060	00	00	00	00	00	00	00	00	00	00	00	00	00	00	00	00	.....
00010070	00	00	00	00	00	00	00	00	00	0E	00	00	00	20	ED	1B	..... i.#
00010080	08	00	C0	D7	F3	2A	00	00	40	04	32	32	32	32	81	00	..R×ó*...@.2222..
00010090	00	00	00	00	00	00	00	00	00	00	00	00	00	00	00	00	.....
000100A0	00	00	00	00	00	00	00	00	00	00	00	00	00	00	00	00	.....
000100B0	00	00	00	00	00	00	00	00	00	00	00	00	00	00	00	00	.....
000100C0	00	00	00	00	00	00	00	00	00	00	00	00	00	00	00	00	.....
000100D0	00	00	00	00	00	00	00	00	00	00	00	00	00	00	00	00	.....
000100E0	00	00	00	00	00	00	00	00	00	00	00	00	00	00	00	00	.....
000100F0	00	00	00	00	00	00	00	00	04	00	00	00	76	8B	78	00	..... v×x.
00010100	09	00	2F	57	F3	2A	00	00	40	04	32	32	32	32	81	00	../Wó*...@.2222..





PSA CAN 500 & 250 kb/s  
Citroen & Peugeot

## VISTEON DCU 102



FLASH ST 10F276

1. The engine ECU must be set to virgin – the engine ECU will learn the code itself.
2. The ISK code 22 22 22 22 22 22 must be inserted in the engine ECU.

If you have any problem with entering ISK code please contact our support on Skype:  
Ecu-Service\_support





Any attempt at larceny, copying, citing or reselling the disclosed ideas, images and graphics in the instruction developed by us – without permission is strictly prohibited.

All afore mentioned are subject to and protected concordantly by the 4.II.1994 enactment respecting copyright and affined laws (Dz.U. nr 24 poz. 93) + protection of the 8.VI.1993 enactment regarding eradicating dishonest competition (Dz.U. nr 47 poz. 211).

Not applying to the conditions specified above will be met with penal consequences!

This company is not liable for the device being used for illegal purposes.

[www.ecu-service.info](http://www.ecu-service.info)

[www.ecu-service.info](http://www.ecu-service.info)